

MOUNTING SYSTEM N1

INDUSTRIAL OR AGRICULTURAL SIMPLIFIED INTEGRATION

N1 mounting system - Industrial or agricultural simplified integration

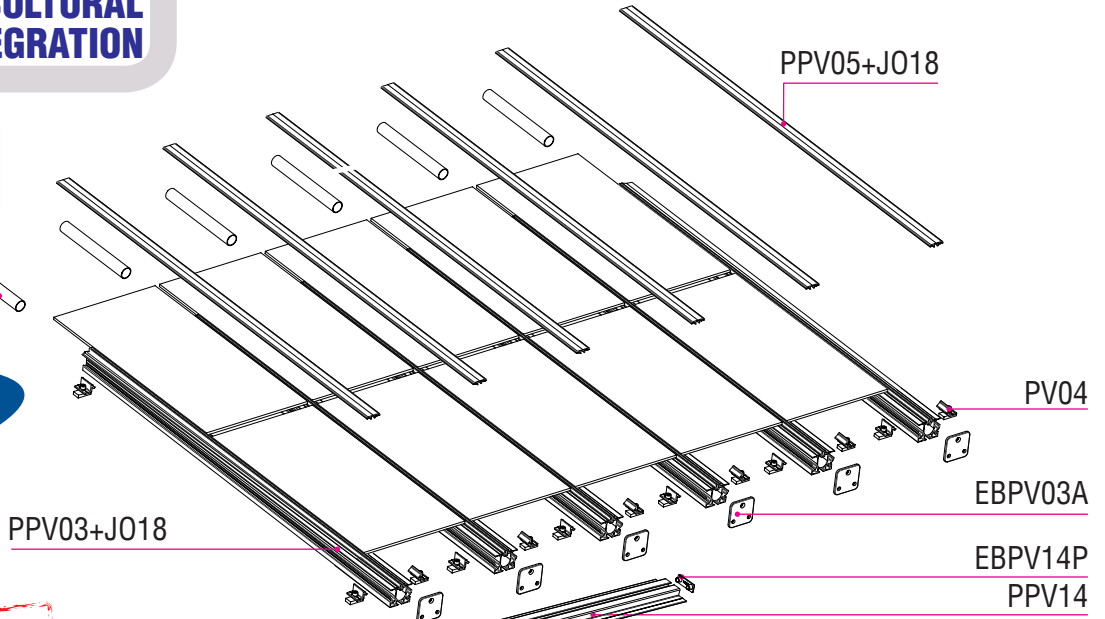
Système N1 surimposé industriel ou agricole (sur toiture existante)

Superposición industrial o agrícola sobre tejado N1 sin marco

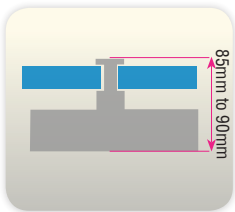
Industrielle oder landwirtschaftliche Bedachungsanlage N1, Module ohne Rahmen



PA04



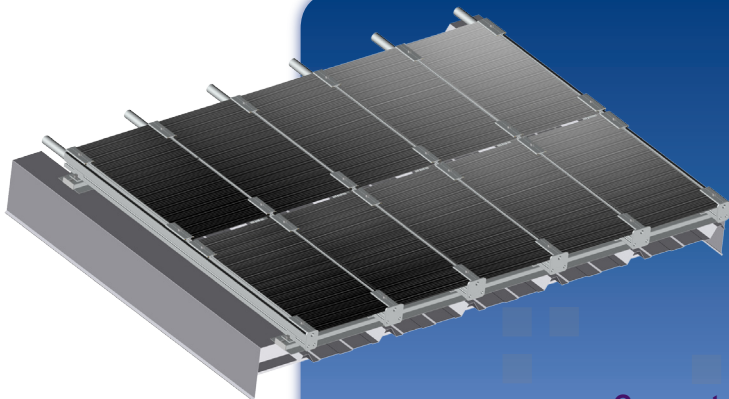
REGISTERED DESIGN
MODÈLE DÉPOSÉ
MODELO REGISTRADO



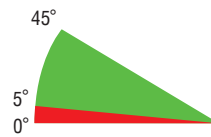
2.00 m max

△ Not supplied
Non fourni
No incluido

MITJAVILA



ADVANTAGES



Tilt angle

- Economical
- Minimum height (extremely flat)
- Unlimited height

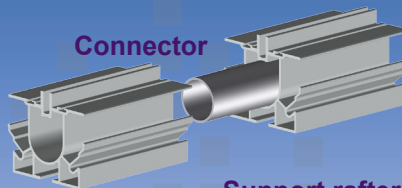
For 5mm to 10mm thick panels

Structure components:

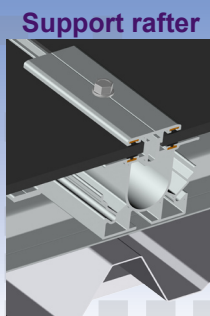
- Aluminium profiles
- Aluminium foundry pieces (AS13)
- A2 stainless steel fastenings RAL 7016 + EPDM washer and joint

Finish:

- Mill finish
- Powder coated with PTFE textured finish finish RAL 7016



Connector



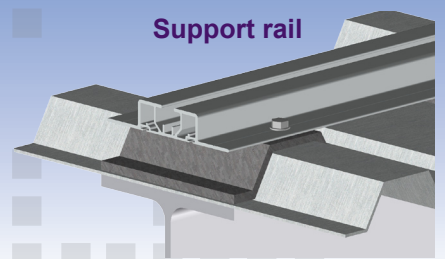
Support rafter



LANDSCAPE INSTALLATION ONLY



FOR UNFRAMED PANELS



Support rail